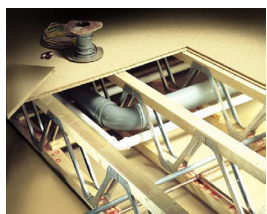




FrameWork Synergies Ltd



TURNING YOUR VISION INTO A **PREMIUM QUALITY HOME**





FrameWork Synergies Ltd

# Build your dream home ...



**FRAMEWORK SYNERGIES IS**  
AT THE FOREFRONT OF  
INNOVATION IN TIMBER FRAME  
CONSTRUCTION. THROUGH  
A WEALTH OF EXPERIENCE  
GAINED OVER THREE DECADES  
IN THE INDUSTRY, WE CAN HELP  
YOU THROUGH EVERY STAGE  
OF YOUR DESIGN AND  
CONSTRUCTION JOURNEY.

## Your dream home becomes a reality.

The process of building your perfect home is one that FrameWork Synergies Ltd can assist with, every step of the way. By utilising our experience in construction, through Value Engineering, Computer Aided Design and the latest timber technology processes, FrameWork Synergies Ltd will be a valued member in the delivery of your project and being part of the project team.

At FrameWork Synergies Ltd we understand the process and time involved in a project life cycle, from concept to completion. The team at FrameWork Synergies Ltd will work closely with all parties to achieve your dream.

# Partnerships Build Confidence



FrameWork Synergies Limited is fast becoming one of the leading timber frame construction specialists in the south, with a wealth of experience spanning over 30 years. Our reputation has been built on our exceptional customer focus and by supplying the highest quality timber frame panels and associated materials to our clients.

Our client base ranges from the self-builders through to established housing developers and Housing Associations. Whether you require a Full Supply and Erect Package or a Supply Only Package, the support from our team is what, we feel, makes us stand out from all other suppliers and this is supported by our repeat client base.

FrameWork Synergies Ltd are timber frame specialists offering full timber frame build solutions for the construction industry and the self build market. Incooperating timber frame wall panels, floor joists and roof trusses, all elements are fully engineered, designed and manufactured to the highest of standards and to all current building regulations and European Codes. With our customer focused approach we pride ourselves on delivering project excellence. We offer full support on all aspects of Planning, Value Engineering, Building Design, Onsite Construction and a full Project Management Service. Our wealth of knowledge and experience is shown in all aspects of our processes and in the deliverance of all projects that we undertake as Timber Frame Construction Consultants.

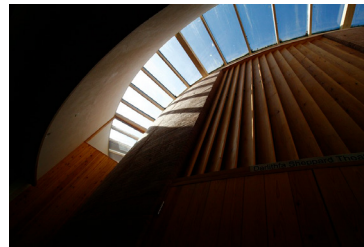




# Benefits Of Timber Frame Construction

Fast, Cost Effective, **Available Now**

Timber frame is one of the most technological advanced and sustainable forms of construction available in the 21st century. It ensures a high quality product, reduces overall build costs and shortens the duration of build programmes. 70% of the developed world's population live in timber frame houses. These include many in the USA, Canada, Scandinavia, Europe, Australia and Japan.



In the UK, timber frame is on the increase, as house-builders and developers recognise the advantages.

## Advantages Of Timber Frame:

- Speed of build
- Offsite manufacturing which means that the timber frame is made in a controlled environment
- Not weather dependent
- Quality of finished goods assured & factory checked
- Savings on Prelims
- Quicker return on capital outlay
- Lightweight structures - often savings in foundations
- Sustainable materials
- Chain of Custody certification
- Key aspect of Code for Sustainable Homes assessment

## Client Benefits:

- Guaranteed manufacturing consistency and product quality
- Reduction in 'design lead-in' time to manufacture commencing
- Reduced detailing input and less risk of design related errors
- Consistent approach to detailing and obtaining approvals
- Brick co-ordinating building heights with aperture head heights brick sized consistent and compliant with Regulations
- Standard stair-rise configurations
- Floor cassettes of up to 9.6 metres with internal load bearing walls positioned at 4.8 metre spans
- Ease of service installation with service voids
- Suited to standard off the shelf materials for follow on trades i.e. minimal plasterboard and brickwork cutting which in turn reduces waste
- Egan compliant, sustainable product
- Reduced costs

# Energy Efficiency

## Energy Efficient Home - Green Credentials

With the ever increasing complications and performance demands on construction and Building Regulations requiring higher standard levels of Energy Efficiency this element of any project becomes more and more important.

Meeting these demanding requirements is achieved by installing insulation, by utilising SAP calculations to identify the require U-values of each element of the building and the specification and installation of the correctly identified insulation all identified U-values can be met.



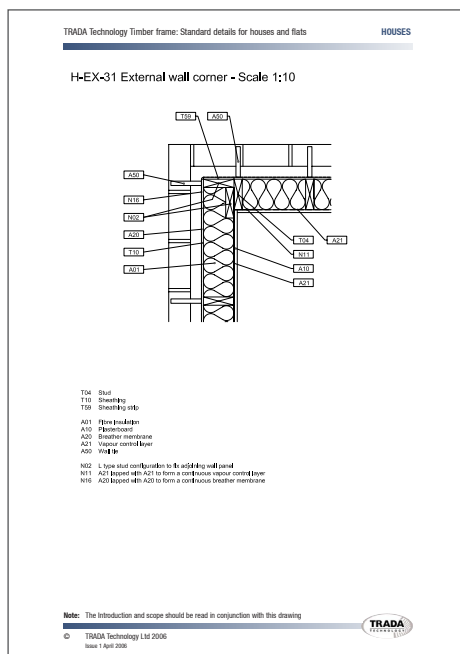
Correctly specified U-values to each element of the building is a requirement for building control and all stated U-values will require to be supported and backed up with full calculations for any project to achieve full Building Control sign off.

At FrameWork Synergies Ltd we can arrange a full service in producing SAP calculations and all supporting documentation to support your project and ensure Building Control sign off.



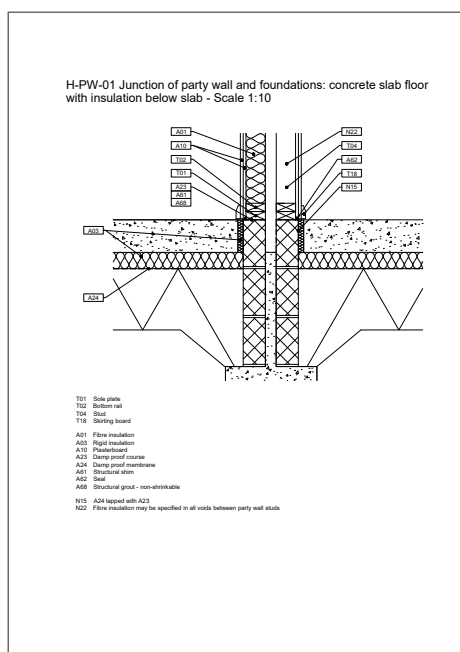
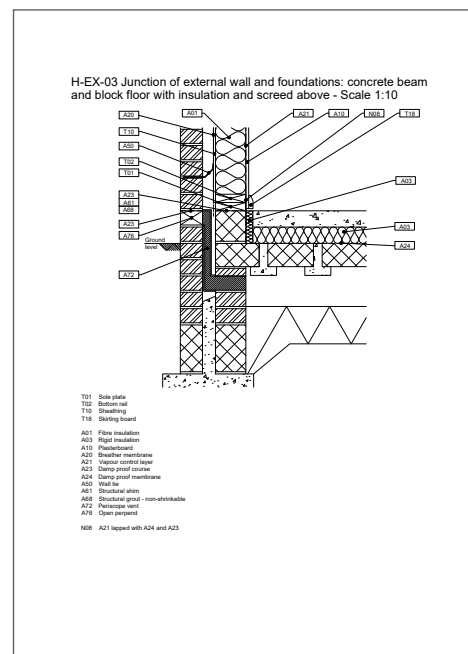
# Technical Detailing and FrameWork Synergies

Working to TRADA detailing, all current Building Regulations and Euro Codes the system of engineering, design and erect implemented by FrameWork Synergies Ltd ensures Building Control Conformation and sign off.



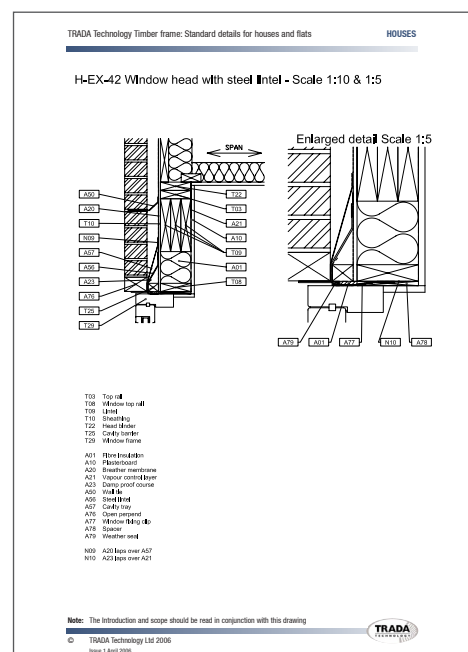
## 1. EXTERNAL WALL CORNER

## 2. JUNCTION OF EXTERNAL WALL AND FOUNDATIONS



## 3. JUNCTION OF PARTY WALL AND FOUNDATIONS

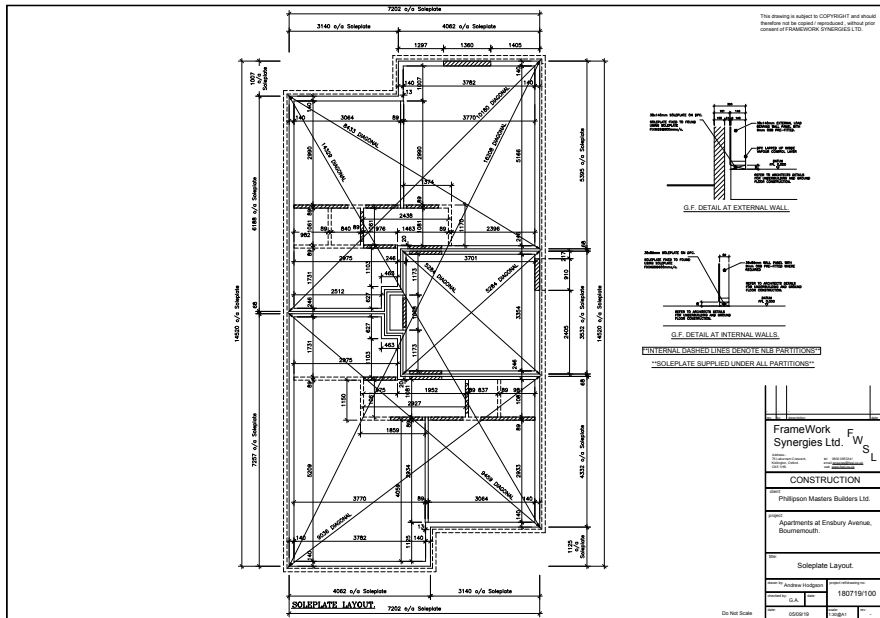
## 4. WINDOW HEAD DETAIL



# Technical Detailing and FrameWork Synergies

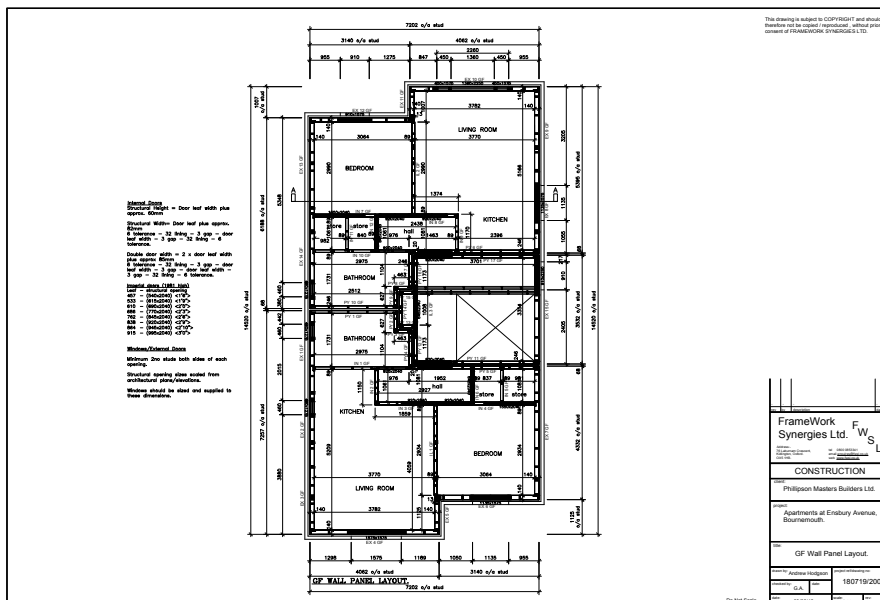
## SOLEPLATE LAYOUT

## Apartments at Ensbury Avenue - Bournemouth

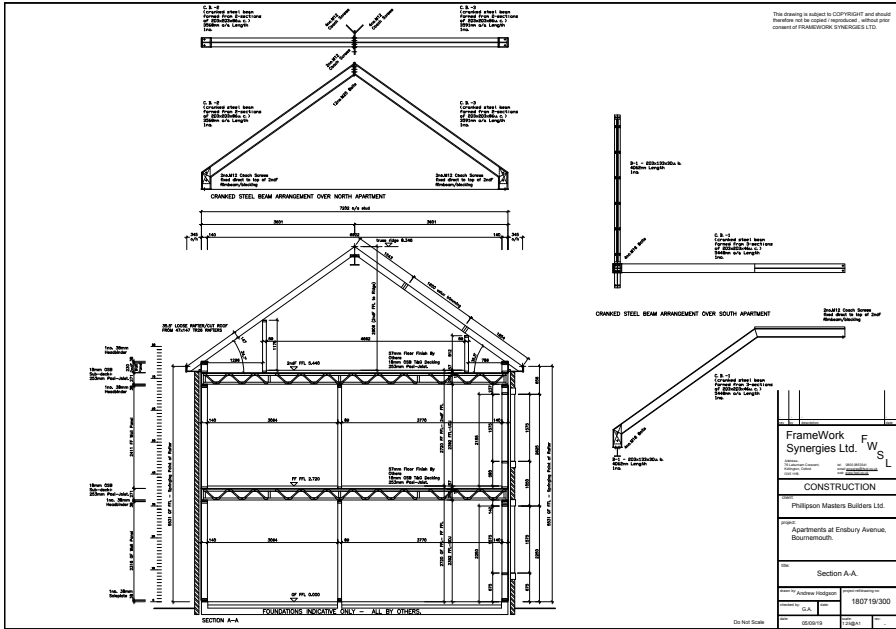


## GF WALL PANEL LAYOUT

## Apartments at Ensbury Avenue - Bournemouth

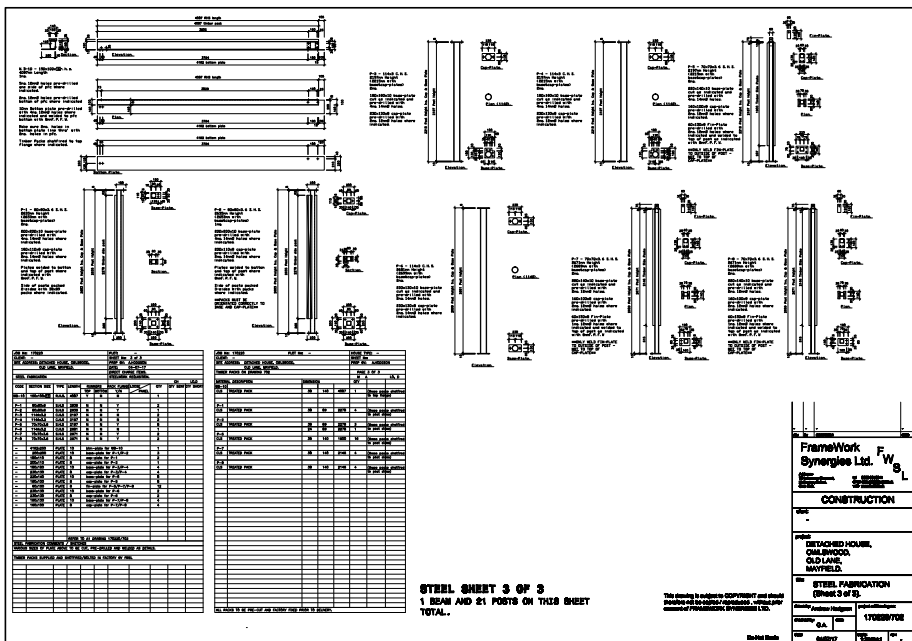


# Technical Detailing and FrameWork Synergies



## SECTION A-A

Apartments at Ensbury Avenue  
- Bournemouth



## STEEL DETAIL



# Construction Choices



FrameWork Synergies Ltd has a flexible approach to our customers' requirements – we understand that every self build project is unique and potentially represents the investment of a lifetime.

- **ENGINEERED TRUSS RAFTERS**

Timber Roof Trusses are highly engineered and individually designed components made from strength graded timber with steel nail-plates.  
TRA standards – BS EN-14250:2010 // BS  
EN-1995-1-1 : 2004 + A2 : 2014 NA to BS  
EN-1995-1-2 : 2004 // PD-6693-1:2012  
– Building regulations approved document  
A // NHBC standards 2018 – structural design  
requirements R5 + Pitch roofs : provision of  
information and design of pitched roofs.

- **FLOOR SYSTEMS**

- Metal Web Joists (Posi).
- Engineered I Joist Floors.
- Solid Timber Floor Joists.

- **TIMBER FRAME PANELS**

- External Load-bearing Wall Panels.
- Internal Load-bearing and Non-load bearing Wall Panels.
- Gable and Firebrake Apex Panels.

- **SAP COMPLIANCE** – at FrameWork Synergies Ltd

we can arrange a full service in producing SAP calculations and all supporting documentation to support your project and deliver the highest possible rating.

- **ENERGY EFFICIENCY** – delivering a low carbon approach to cost and comfort, FrameWork Synergies Ltd's Timber Frame System offers excellent thermal performance and air-tightness for timber frame homes.

- **OUR EXPERTISE** – our experienced team.

With a combined experience of 30 years in the construction industry and 20 years specialising in Timber Frame, we offer full support on all aspects of **Planning, Value Engineering, Building Design, Onsite Construction, Timber Frame Consulting and Full Project Management Services.**

Our wealth of knowledge and experience is shown in all aspects of our processes and in the deliverance of all projects that we undertake as **Timber Frame Construction Consultants.**

1. Engineered Metal Web Joists.



2. I - Joists.



3. External Load-Bearing Wall Panels.





## Leading Timber Frame Construction Specialists - where your design and construction journey begins...

Framework Synergies Ltd offer a wide range of timber frame services from full supply and erect packages to supply only. Utilising and partnering with leading industry systems that have the capability to exceed building regulations. As a responsible organisation, FrameWork Synergies Ltd are committed to sourcing timber from traceable renewable sources, fully compliant with the Chain of Custody certification.

With over 30 years construction experience and over 20 years within timber frame the team at FWSL lead by their co-founder Alan have adopted a can do partnering philosophy that ensures that the clients requirements are always met and that the client is always part of the construction journey.

### Get in Touch - Contact a member of our team today!

#### Head Office:

FrameWork Synergies Ltd,  
Synergies House,  
76 Laburnum Crescent,  
Kidlington,  
Oxford, OX5 1HB

[info@fwsl.co.uk](mailto:info@fwsl.co.uk)

Tel: 0800 0853341

Mobile: 07712 117008

We aim to reply within 48 hours.

For quotations please contact us and we will arrange to quote you on the review of your drawings.

We would like to hear from you regarding any aspect of our services.

